

**ABHANI
COMMERCIAL
LIMITED**

Build Better.
Build Your Tomorrow.

COMPANY PROFILE





Abhani Commercial Limited is a manufacturing and trading business operating in Kenya for the past 40 years having commenced operations in 1980.

Girdharlal Mulji Thaker, founder of the Abhani Group, migrated from India to work in the Kenya Railways and later decided to venture into his own business by opening up a Paints shop in Mombasa.

The business started as a small 'duka' with only 2 staff selling paints, but today has grown into a vibrant organisation having diversified into plumbing and hardware materials and also into the manufacturing of PVC plumbing fittings and now employing 50 staff.

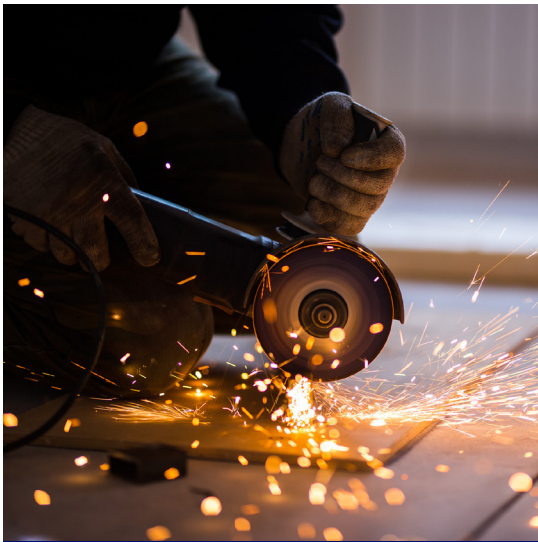
The family business is now being run by the 3rd generation Abhani's. The Abhani Group operates through its 2 retail outlets in Mombasa, its 50,000 sq ft distribution facility also in Mombasa and it's showroom and offices in Nairobi.



Core Strength

Our core strength lies in providing our clients with top quality products suitable for the local market at value prices whilst also ensuring that clients get unmatched service and support.

This is made possible due to the strong supplier base which includes products coming from various countries such as UK, Italy, Germany, France, USA, India, South Africa, Egypt, UAE, Vietnam and China amongst others, as well as the continual focus in ensuring client satisfaction. Whilst working with leading international brands, we have also identified value brands who supply products with the same international certifications as the leading international brands but at value prices.



Vision

To be the preferred supplier of choice to Developers, Contractors, Dealers and End-users for our product range across East Africa.

Mission

To keep providing our clients with a best in class value-for-money proposition whilst constantly updating the market with innovative products.



GROHE is a leading global brand for complete bathroom solutions and kitchen fittings and has a total of over 6,000 employees. GROHE has been part of the LIXIL Group Corporation since 2014. As an international brand, GROHE pursues the brand values of technology, quality, design and sustainability, seeking to offer the "Pure joy of water". As a result, GROHE products carry the seal of quality "Made in Germany". In the last ten years alone, GROHE has received over 300 design and innovation awards as well as several top rankings as one of "Germany's most sustainable large brands", confirming the success of the brand.



Cobra was established in 1951, opening a factory in Krugersdorp that manufactured taps and plumbing fittings for the local market. The company was founded on the premise that business success would only follow the production and supply of consistently superior products and so the first cornerstone of its success Cobra's uncompromising commitment to quality was established. Cobra adheres to the most stringent global quality standards and has consistently achieved South Africa Bureau of Standards (SABS) certification for over 60 years.



Aqua Plumbings admires the beauty of water and respects its place in our culture. This drives our relentless pursuit of quality and spirit of craftsmanship. With this simple philosophy, the brand Plumber was born in 1989. The mission was to create a good product that is honestly made and sincerely sold. The World of Plumber stand on two professed benchmarks of constant innovation and uncompromising quality. Plumber Bathware believes in delivering performance through uncompromising quality and constant innovation. With unique quality features and its experience in the category brand Plumber is unsurpassed in the arena of bath fittings. With more than two decades of experience, Plumber offers beautiful ranges in sanitaryware and faucets for you to choose from.



CERA is a complete bathroom solutions provider based in India and is India's fastest growing company in this segment. Its state-of-the-art manufacturing plant has been following the highest standards of quality with an emphasis on sustainability since its inception in 1980. CERA has been presented the Gold Award in the bathroom & fittings and sanitaryware category by Readers' Digest Trusted Brand Survey. CERA has also bagged the Product of the Year award for years in a row for Cerenity in 2014, Sanitaryware & Bathroom Fittings in 2013, Nano Technology in 2012 and for the Snow White Range in 2011.



Kich Architectural Products Pvt. Ltd. is India's leading manufacturer in the Premium segment of Architectural Hardware, Glass Fittings, Furniture Fittings, Bathroom Accessories and Handrails & Baluster Systems. Since inception, Kich has always fulfilled global quality parameters. Kich operates from a state-of-the-art manufacturing facility which spreads in 230,000 sq. ft. area in Rajkot. Due to an in-house Design Studio, Tool Room, R&D Division and Product Testing Facility, Kich has succeeded in consistency of product performance.



Havells India Limited is a leading Fast Moving Electrical Goods (FMEG) Company and a major power distribution equipment manufacturer with a strong global presence. Havells enjoys enviable market dominance across a wide spectrum of products, including Industrial & Domestic Circuit Protection Devices, Cables & Wires, Motors, Fans, Modular Switches, Home Appliances, Air Conditioners, Electric Water Heaters, Power Capacitors, Luminaires for Domestic, Commercial and Industrial Applications. opted world-class technology and automation to ensure that we produce our goods efficiently with emphasis on conservation of energy and water in a sustainable manner. We pursue methodology of Total Quality Management to improve product quality and recycle and reuse our waste materials



Atlantic is a well-established and renowned French brand, expert in all types of heating systems and home comfort appliances, with a worldwide presence. Specialist of heating systems and comfort appliances, Atlantic constantly combines premium design, innovation and cutting-edge technology. We have developed a complete range of modern and reliable equipment such as water heaters, electric heaters, bathroom heaters, solar water heaters, heat pumps, etc. Symbol of the French art of living, they bring you daily an optimum comfort while optimising cost savings.



Neoseal is a leading manufacturer of adhesives and solvents based in India and having a Technical collaboration with Creative Adhesives Inc., USA. NeoSeal products are designed and developed by experienced chemists, engineers and scientists. Our products meet or exceed the performance requirements of ASTM (American Society for Testing Materials) standards and certified by NSF (NSF International, USA). Achievement of ISO 9001:2015 (from TÜV SÜD South Asia) certification further strengthens our consistent quality and commitment to our customers.



MIRAN brand was born with the intention of addressing a gap in the market for Quality plumbing and sanitary ware products at affordable prices, hence the brand slogan 'Quality & Value'. The creators of MIRAN have over 40 years experience in this line of products as well as in the Kenyan market which has some specific characteristics in relation to water and atmospheric conditions that have an adverse effect on these types of products. It is this deep know-how together with the wide global supplier network that has enabled MIRAN to live by its 'Quality & Value' as well as 'Built for Africa' slogans. MIRAN sanitary ware products are sourced from factories that have received global certifications such as ISO 9001, CE (European), Watermark (Australian), and UPC (American) thereby ensuring that excellence in quality is maintained and this is a key differentiator of MIRAN products.



UNIDELTA is a leader in HDPE plumbing and heating systems based in Italy thanks to its vast know-how gleaned in over forty years of experience, a guarantee of superior quality, certified at all stages of the production process (UNI EN ISO 9001:2000) and for all products.



For many decades, Dutron Group is rated as one of the most renowned manufacturers of plastic pipe and fittings systems in India. Dutron CPVC Hot and Cold Water Plumbing System is an attractive alternative to conventional plumbing system made of G.I and PPR. Dutron Hot and Cold Water Plumbing system uses pipes and fittings made of technically advanced plastic material. Dutron CPVC pipes and fittings are manufactured in sizes ½" to 2" with ISI (IS 15778) mark and 2 ½" to 6" as per ASTM F441. Pipes are produced out of extrusion process while injection moulded, under international ISO 9001:2015 process standards, with most sophisticated systems for quality assurance.



TORRENT is a proudly Kenyan brand of PVC plumbing fittings having manufacturing operations based in Kenya. TORRENT products are made to international standards and boasts of being the best-in-class quality product manufactured locally.

Other Brands



PLUMBING



HDPE
PVC
IPS
PPR
CPVC
Sanitary Ware
Assorted Plumbing Fittings
Valves

HARDWARE



Architectural Hardware
Locks
Tools
Fasteners

OTHERS



Solvents
Dyes
Shellac





Project Name	Phenom Park
Details	240 Houses
Location	Langata, Nairobi
Approximate Price of Housing	30 Million Houses, 15m Apartments
Brands Supplied	CERA, KICH, MIRAN & PLUMBER



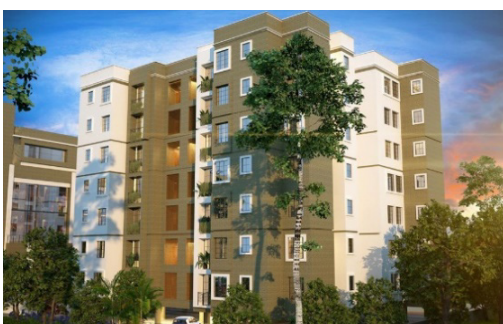
Project Name	Aspire Homes
Details	12 Townhouses
Location	Lavington, Nairobi
Approximate Price of Housing	65 Million
Brands Supplied	CERA, KICH, MIRAN & PLUMBER



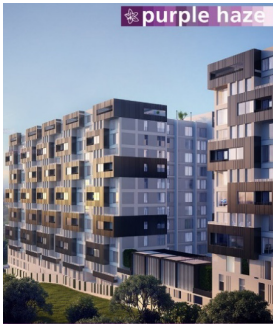
Project Name	Heron Nest
Details	48 Apartments
Location	Parklands, Nairobi
Approximate Price of Housing	20 Million
Brands Supplied	CERA, MIRAN & PLUMBER



Project Name	Katani Villas
Details	72 Houses
Location	Syokimau, Nairobi
Approximate Price of Housing	13 Million
Brands Supplied	CERA, MIRAN & PLUMBER



Project Name	Grand Eben Apartment
Details	42 Apartments
Location	Ngong Road, Nairobi
Approximate Price of Housing	15 Million
Brands Supplied	CERA, KICH, MIRAN & PLUMBER



Project Name	Purple Haze
Details	220 Apartments
Location	Kilimani, Nairobi
Approximate Price of Housing	20 Million
Brands Supplied	KICH



Project Name	37 On Kikambala
Details	37 Apartments
Location	Kileleshwa, Nairobi
Approximate Price of Housing	20 Million
Brands Supplied	KICH & MIRAN



Project Name	Ocean 7
Details	50 Apartments
Location	Shanzu, Mombasa
Approximate Price of Housing	35 Million
Brands Supplied	KICH



Project Name	KSIJ Trust Apartments
Details	78 Apartments
Location	Kizingo, Mombasa
Approximate Price of Housing	6 Million
Brands Supplied	KICH



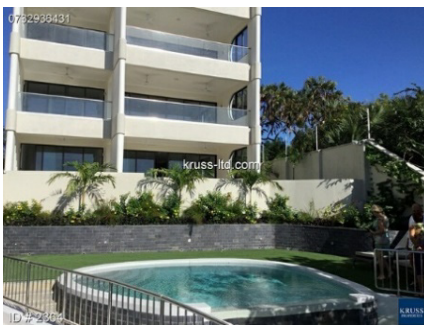
Project Name	Pearl Beach Apartments
Details	72 Apartments
Location	Tudor, Mombasa
Approximate Price of Housing	N/A
Brands Supplied	MIRAN & PLUMBER



Project Name	Water Front Residency
Details	16 Apartments
Location	Mkomani, Mombasa
Approximate Price of Housing	Serviced Apartments
Brands Supplied	KICH & MIRAN



Project Name	Swahili Gem
Details	14 Apartments
Location	Tudor, Mombasa
Approximate Price of Housing	30 Million
Brands Supplied	GROHE, KICH & MIRAN



Project Name	Mawimbi Residences
Details	14 Apartments
Location	Nyali, Mombasa
Approximate Price of Housing	50 Million
Brands Supplied	KICH



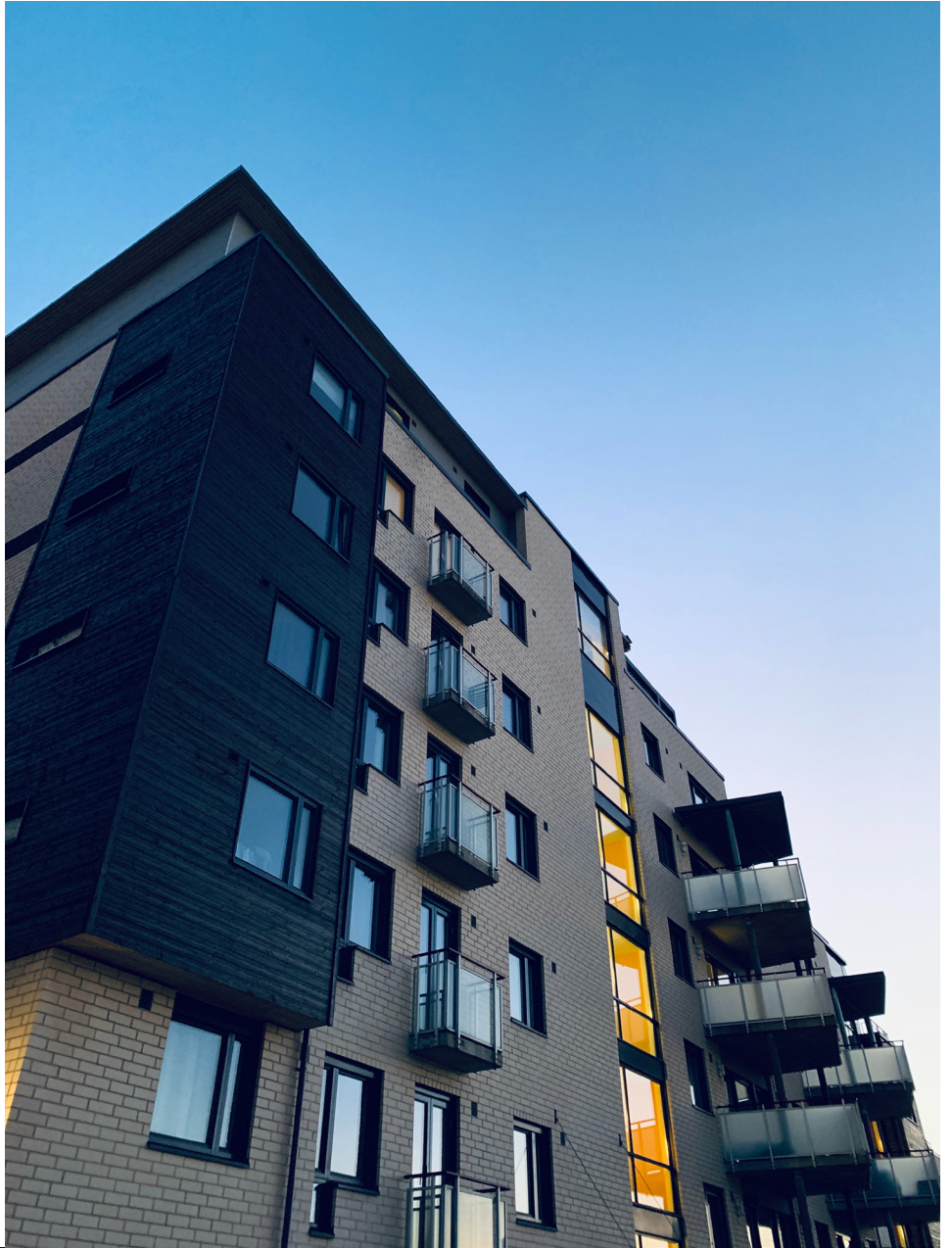
Project Name	Mama Ngina Drive
Details	Museum
Location	Light House, Mombasa
Approximate Price of Housing	N/A
Brands Supplied	KICH

Some Of Our Esteemed Clients



Amani Tiwi Beach Resort
Diani Reef Hotel
Travellers Beach Hotel
Severin Sea Lodge
Nyalı Beach Holiday Resort
Sun n Sand Resort
English Point Marina
Mtwapa Luxury Holiday Homes
Wild Waters
City Mall
Nyalı Centre
Nyalı Cinemax
Nyalı Golf & Country Club
Vipingo Ridge
Mombasa Hospital
The Aga Khan School
Shree Swaminarayan Academy
MM Shah School
Umoja Rubber
Coastal Bottlers

GET IN TOUCH



Connect With Us

Turkana Street, Mombasa, Kenya

P O Box 84075-80100

+254 739 327 387

info@abhani.com